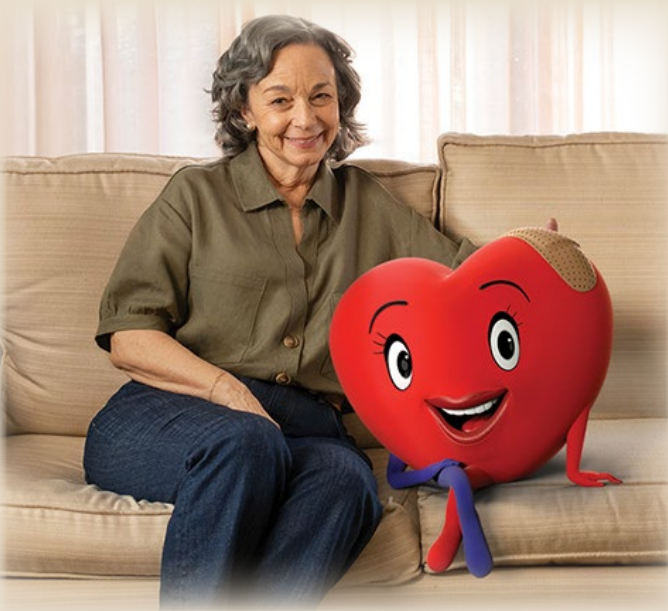


For adults with heart disease



listen to your  
**heart**



Repatha® + a statin  
**LOWERS LDL-C** by an average of

**63%**

in 3 months

#### APPROVED USE

##### What is Repatha®?

Repatha® is an injectable prescription medicine used:

- to reduce the risk of major adverse cardiovascular (CV) events, such as death from cardiovascular disease, heart attack, stroke, certain types of chest pain conditions (unstable angina) requiring hospitalization, or certain types of heart surgery, in adults with cardiovascular disease

#### IMPORTANT SAFETY INFORMATION

**Do not use Repatha® if you** are allergic to evolocumab or to any of the ingredients in Repatha®.

**Please see additional Important Safety Information.**

WELCOME

WHAT IS  
LDL-C?

ABOUT  
REPATHA®

YOUR LDL-C  
GOALS

LDL-C  
TRACKER

SUPPORT

CO-PAY CARD

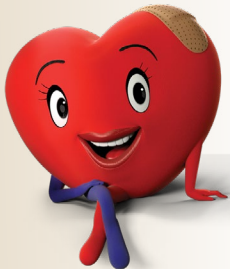
IMPORTANT  
SAFETY  
INFORMATION

# Hi There!

If you have heart disease and are struggling to lower your LDL-C (bad cholesterol), you're not alone. Even if you're trying your best with diet, exercise, and a statin, sometimes you need to do more.

The good news is now you're here. And with this brochure, we're going to help you understand how you can lower your LDL-C and reduce your risk of a heart attack, stroke, or certain types of heart surgery with Repatha®.

**Love,**



For adults with heart disease

**Repatha**  
(evolocumab) injection  
140 mg/mL



## IMPORTANT SAFETY INFORMATION

**Before you start using Repatha®**, tell your healthcare provider about all your medical conditions, including if you are allergic to rubber or latex, are pregnant or plan to become pregnant, or are breastfeeding or plan to breastfeed. Repatha® is available as prefilled single-dose SureClick® autoinjectors and prefilled single-dose syringes that either contain dry natural rubber (a derivative of latex) in the needle cover or are not made with natural rubber latex. The carton and "Instructions for Use" will state if your prefilled single-dose SureClick® autoinjector or prefilled single-dose syringe contains dry natural rubber. The single-dose Pushtronex® system (on-body infusor with prefilled cartridge) is not made with natural rubber latex.

Tell your healthcare provider or pharmacist about any prescription and over-the-counter medicines, vitamins, or herbal supplements you take.

**Please see additional Important Safety Information.**

WELCOME

WHAT IS  
LDL-C?

ABOUT  
REPATHA®

YOUR LDL-C  
GOALS

LDL-C  
TRACKER

SUPPORT

CO-PAY CARD

IMPORTANT  
SAFETY  
INFORMATION

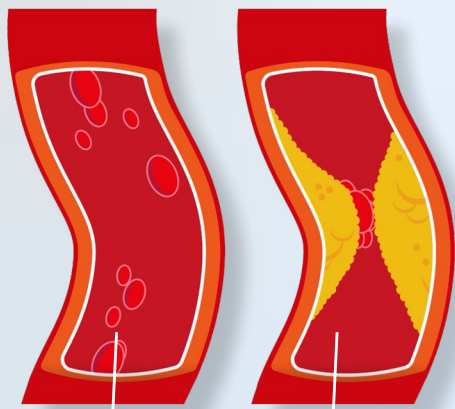
# High LDL-C (bad cholesterol) can put you at risk for a heart attack or stroke

**Did you know high LDL-C, or low-density lipoprotein cholesterol, can build up in the walls of your arteries, form plaque, and block blood flow, putting you at risk of a serious cardiovascular event? It's true! That's why it's called bad cholesterol.**

High LDL-C usually doesn't have any symptoms, so many people might not think too much about it—until they experience a heart attack, stroke, or need a stent or bypass surgery—

**which is why high LDL-C must be lowered.**

**You can't feel plaque in your arteries, but it may be there!**

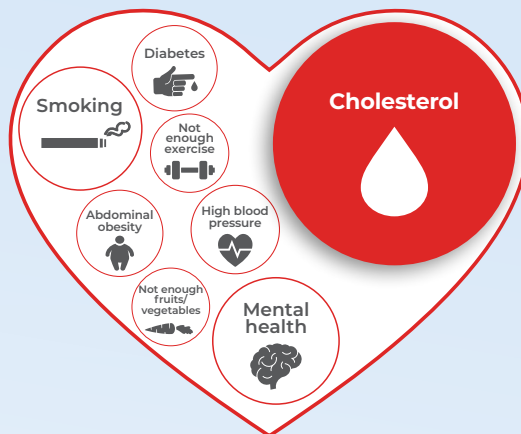


**No cholesterol buildup**  
Normal blood flow

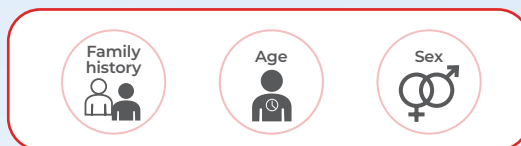
**Cholesterol buildup**  
Plaque blocks blood flow

## Factors that increase your risk of heart attack and stroke

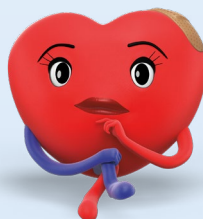
### Risk factors that can be changed



### Risk factors that can't be changed



**High LDL-C** is one of the most important factors **we can change** to reduce the risk of a heart attack.



If you had a **heart attack**, you are most likely to experience another event within the **first year.**

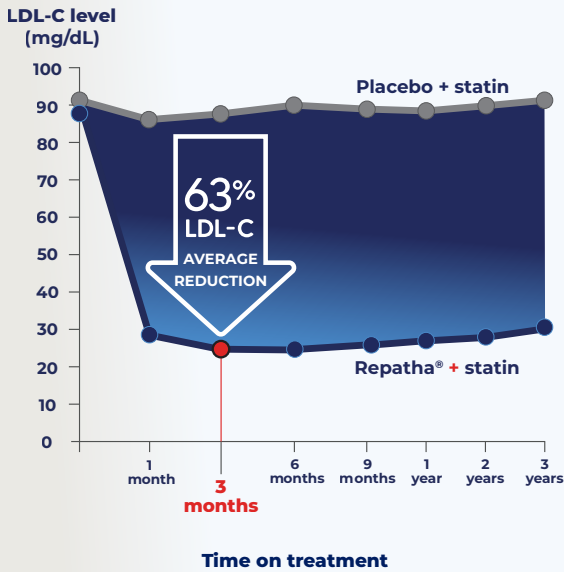
## IMPORTANT SAFETY INFORMATION

### What are the possible side effects of Repatha® (evolocumab)?

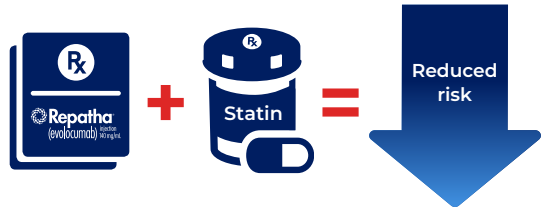
Repatha® can cause serious side effects including serious allergic reactions. Stop taking Repatha® and call your healthcare provider or seek emergency help right away if you have any of these symptoms: trouble breathing or swallowing, raised bumps (hives), rash or itching, swelling of the face, lips, tongue, throat or arms.

**Please see additional [Important Safety Information](#).**

# Repatha® dramatically lowers LDL-C

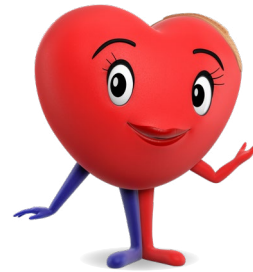


## Adding Repatha® to a statin can dramatically lower LDL-C and reduce the risk of heart attack



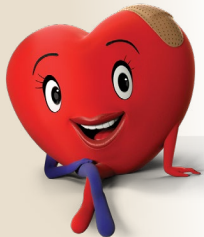
### Repatha® + a statin is proven to reduce your risk of a heart attack by 27%

In a study, patients not treated with Repatha® had more heart attacks (4.6%) compared to those treated with Repatha® (3.4%).



**In just 2 weeks Repatha® starts working to bring bad cholesterol down.**

**84% of people who added Repatha® to their statin lowered their bad cholesterol below 55 mg/dL in just 1 month.**



I knew we could get our LDL-C to a better place.

#### IMPORTANT SAFETY INFORMATION

##### What are the possible side effects of Repatha®? (continued)

The most common side effects of Repatha® include: runny nose, sore throat, symptoms of the common cold, flu or flu-like symptoms, back pain, high blood sugar levels (diabetes) and redness, pain, or bruising at the injection site.

Tell your healthcare provider if you have any side effect that bothers you or that does not go away.

These are not all the possible side effects of Repatha®. Ask your healthcare provider or pharmacist for more information. Call your healthcare provider for medical advice about side effects.

**Please see additional Important Safety Information.**

# Repatha®. Prescribed worldwide.

Since 2015, Repatha® has been approved in **75 different countries** and prescribed to **3.7 million people** around the world.

Every journey is different, so talk to your doctor and find out if Repatha® is right for you.

**Repatha**  
(evolocumab) injection  
140 mg/mL



With the convenience of self-administration, you can take Repatha® on the go.\*



Scan or click the QR code to learn more about administering, storing, and traveling with Repatha®.



Each SureClick® Autoinjector administers Repatha® in up to 15 seconds. That's just **6.5 minutes** per year for an every 2 week administration.†



In a study, after receiving training from a healthcare professional, **94%** of patients successfully administered at home with the Repatha® SureClick® device.‡

\*Store Repatha® in the refrigerator at 36°F to 46°F (2°C to 8°C) until you're ready to use it. Repatha® can also be stored at room temperature at 68°F to 77°F (20°C to 25°C) in its original box for up to 30 days.

†Not inclusive of preparation and time for autoinjector to reach room temperature before administering.

‡Percent of patients who reported 2 full-dose administrations of Repatha® in a study. The patients received training from a healthcare professional on how to self-administer Repatha®.

**Take every 2 weeks.**  
SureClick® autoinjector



Single-dose prefilled autoinjector (140 mg/mL)

**Learn more about how to take Repatha®.**

Scan or click the QR code on the left for Instructions for Use. Click on the Demo Video below for other helpful resources.



For key injection steps, go to [RepathaSureClick.com](https://RepathaSureClick.com)

## IMPORTANT SAFETY INFORMATION

**Do not use Repatha® if you** are allergic to evolocumab or to any of the ingredients in Repatha®.

**Please see additional Important Safety Information.**



# ARE YOUR LDL-C LEVELS IN CHECK?

LDL-C recommended levels depend on different factors such as age, overall health, and cardiovascular health history.

For example, your recommended LDL-C level may be below

**55 mg/dL** ✓

if you check one of boxes below.

- More than 1 stroke or heart attack or procedure, such as stent or bypass surgery

**OR**

- 1 stroke or heart attack or procedure, such as stent or bypass surgery

**AND**

- Multiple risk factors, including diabetes, high blood pressure, age 65 or older, smoking, and obesity

Only your doctor can tell you what your recommended level should be.

With Repatha®, we're on the road to lowering our LDL-C (bad cholesterol) and our risk for a heart attack.

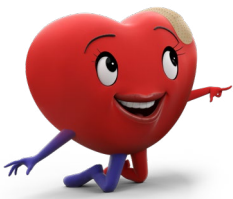


### IMPORTANT SAFETY INFORMATION

**Before you start using Repatha®**, tell your healthcare provider about all your medical conditions, including if you are allergic to rubber or latex, are pregnant or plan to become pregnant, or are breastfeeding or plan to breastfeed. Repatha® is available as prefilled single-dose SureClick® autoinjectors and prefilled single-dose syringes that either contain dry natural rubber (a derivative of latex) in the needle cover or are not made with natural rubber latex. The carton and "Instructions for Use" will state if your prefilled single-dose SureClick® autoinjector or prefilled single-dose syringe contains dry natural rubber. The single-dose Pushtronex® system (on-body infusor with prefilled cartridge) is not made with natural rubber latex.

Tell your healthcare provider or pharmacist about any prescription and over-the-counter medicines, vitamins, or herbal supplements you take.

**Please see additional Important Safety Information.**



# Let's ask the doctor about our LDL-C goal.

## Track your LDL-C (bad cholesterol) progress



### Know your numbers.

Knowing your current LDL-C level and what level you should be below can be an important part of managing bad cholesterol. A blood test called a lipid panel can determine your cholesterol level and with regular testing, when ordered by your doctor, you can track your progress with your doctor.



### Consider asking your primary care provider or cardiologist these 5 questions.

1. What was my most recent LDL-C level?
2. What is the recommended level I should be below?
3. Why should I take Repatha® in addition to a statin?
4. When should I take my next test?
5. Can I stop taking Repatha® once I reach my recommended level?

### My doctor says my recommended LDL-C level is below:

Mark your recommended level on the chart by drawing a line across



### Date I started Repatha® (evolocumab):



Mark the date of your test →

TEST 1

TEST 2

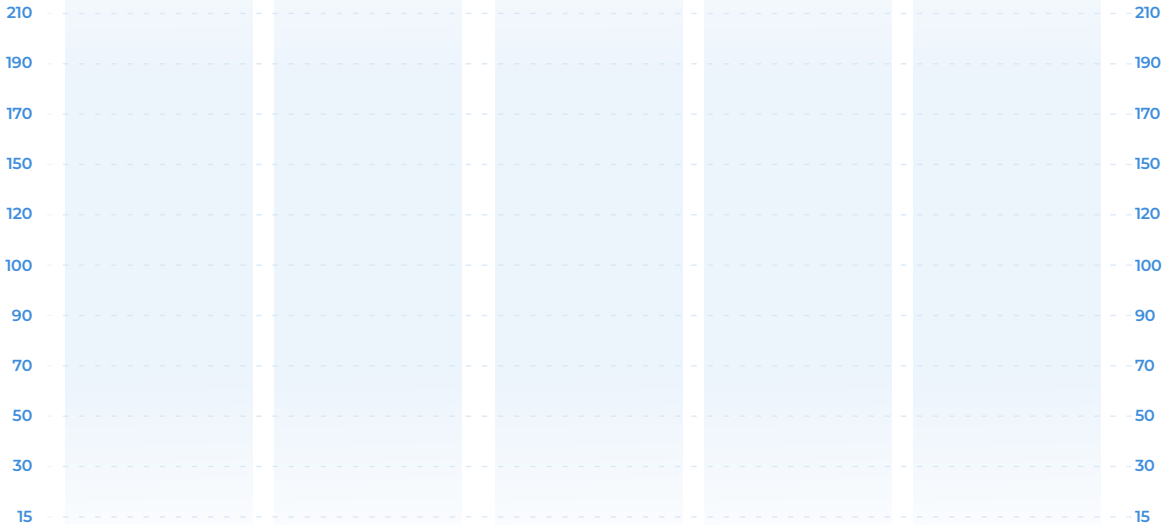
TEST 3

TEST 4

TEST 5

Enter your test results in the boxes →

LDL-C LEVEL (mg/dL)



When you see your doctor, don't forget to ask about **scheduling a follow-up** to check your level.



Remember that if you stop taking Repatha®, your bad cholesterol can increase. **You should not stop taking Repatha® without talking to your doctor.**

This is for your information only and is being provided for you to discuss with your doctor. This content is not intended to be a source of medical advice, diagnosis, or treatment and does not replace in any way independent medical advice or your physician's judgment regarding diagnosis or treatment recommendations.

### IMPORTANT SAFETY INFORMATION

#### What are the possible side effects of Repatha®?

Repatha® can cause serious side effects including serious allergic reactions. Stop taking Repatha® and call your healthcare provider or seek emergency help right away if you have any of these symptoms: trouble breathing or swallowing, raised bumps (hives), rash or itching, swelling of the face, lips, tongue, throat or arms.

**Please see additional [Important Safety Information](#).**

## We're right here, right when you need us

Personalized patient support for your Repatha® (evolocumab) journey

Amgen® SupportPlus is designed to meet the specific needs of your particular Repatha® journey. This program provides you with customized support in the form of emails, texts, and access to a personalized dashboard that helps you start and stay on Repatha®.



Scan or click this QR code to enroll in Amgen® SupportPlus.

### AMGEN® SUPPORTPLUS RESOURCES. AT NO COST TO YOU.



**Amgen® Nurse Partners®** supplemental support to answer your questions and get you more comfortable administering Repatha® on your own



**Information, education, and resources tailored** to guide you along your unique treatment journey



**Courtesy treatment/refill reminders** via text or email that remind you when it's time to administer your Repatha® treatment or refill your prescription



**Free sharps disposal container** mailed to your home

To learn more, go to [www.RepathaSupport.com](http://www.RepathaSupport.com)

\*Amgen® Nurse Partners are only available to patients that are prescribed certain Amgen products. They are not part of your treatment team and do not provide medical advice, nursing, or case management services. Amgen® Nurse Partners will not inject patients with Amgen medications. Patients should always consult their healthcare provider regarding medical decisions or treatment concerns.

## PAYING FOR REPATHA®

### COMMERCIAL

AS LITTLE AS  
**\$15**

per month with the Repatha® Co-Pay Card<sup>†</sup> for eligible commercially insured patients. To enroll, visit [Repatha.com/copay](http://Repatha.com/copay)

### MEDICARE

AS LITTLE AS  
**\$50**  
OR LESS

for ~73% of Repatha® prescriptions<sup>‡</sup>

### MEDICAID

AS LITTLE AS  
**\$10**  
OR LESS

for 99% of Repatha® prescriptions<sup>‡</sup>

### REPATHA® IS COVERED BY INSURANCE FOR

**9 OUT OF 10 PATIENTS<sup>§</sup>**



### Uninsured or Underinsured?

Call **Amgen® SupportPlus** at **1-844-REPATHA** for information about independent nonprofit foundations that may be able to help.\*\*

<sup>†</sup>Eligibility criteria and program maximums apply. Please visit [\[Repatha.com/copayctcs\]](http://Repatha.com/copayctcs).

<sup>‡</sup>Based on IQVIA claims data from 1/1/2023 to 12/31/2023 using the respective Medicare or Medicaid data.

<sup>§</sup>Coverage is across all payment types and estimated as of October 2023.

\*\*Eligibility for resources provided by independent nonprofit patient assistance programs is based on the nonprofit's criteria. Amgen has no control over these programs and provides information as a courtesy only.

Please see **Important Safety Information**.



# Commercially insured patients may pay as little as **\$15 per month\***

You may **reduce your out-of-pocket costs** with the Repatha® Co-Pay Card.

Examples of commercial insurance include PPO, HMO, or COBRA.



Scan or click the QR code here

\*Eligibility criteria and program maximums apply. Please scan the QR code for full Terms and Conditions or visit [\[Repatha.com/copaytcs\]](https://www.Repatha.com/copaytcs).

To enroll and use the Repatha® Co-Pay Card, follow these simple steps



**Sign up** for the Co-Pay Card by visiting [Repatha.com/copay](https://www.Repatha.com/copay)



**Print, screenshot, or save** Co-Pay Card info shown on confirmation page or provided in your confirmation email



**Share** your Repatha® Co-Pay Card with your pharmacist when picking up your prescription and **pay as little as \$15 a month\***

Enroll today at [Repatha.com/copay](https://www.Repatha.com/copay)

## Repatha® Co-pay Card Terms and Conditions

### SUMMARY OF TERMS AND CONDITIONS

It is important that every patient read and understand the full Repatha® (evolocumab) Co-pay Card Terms and Conditions. The following summary is not a substitute for reviewing the Terms and Conditions in their entirety.

As further described in the full terms and conditions, in general:

- The Repatha® Co-pay Card is open to patients with commercial insurance, regardless of financial need. The program is not valid for patients whose Repatha® prescription is paid for in whole or in part by Medicare, Medicaid, or any other federal or state healthcare program. It is not valid for cash-paying patients or where prohibited by law.
- With the Repatha® Co-pay Card, a commercially insured patient who meets eligibility criteria may lower their Repatha® monthly out-of-pocket costs. Monthly out-of-pocket costs include co-payment, co-insurance, and deductible out-of-pocket costs. Amgen will pay the remaining eligible out-of-pocket costs on behalf of the patient up to a Maximum Monthly Benefit, a Maximum Annual Program Benefit and/or the Patient Total Program Benefit. Patients are responsible for all amounts that exceed these limits.

- Offer is subject to change or discontinuation without notice.
- The Repatha® Co-pay Card provides support up to the Maximum Monthly Benefit, the Maximum Annual Program Benefit and/or Patient Total Program Benefit. If a patient's commercial insurance plan imposes different or additional requirements on patients who receive Repatha® Co-pay Card benefits, Amgen has the right to modify or eliminate those benefits. Whether you are eligible to receive the Maximum Monthly Benefit, Maximum Program Benefit or Patient Total Program Benefit is determined by the type of plan coverage you have. Please ask your Amgen SupportPlus Representative to help you understand eligibility for the Repatha® Co-pay Card, and whether your particular insurance coverage is likely to result in your reaching the Maximum Monthly Benefit, the Maximum Annual Program Benefit, or your Patient Total Program Benefit, by calling 1-844-REPATHA (1-844-737-2842).
- Please see the full Terms and Conditions at [\[Repatha.com/copaytcs\]](https://www.Repatha.com/copaytcs).

Please see **Important Safety Information**.

For adults with heart disease



listen to your heart



## IMPORTANT SAFETY INFORMATION

**Do not use Repatha® if you** are allergic to evolocumab or to any of the ingredients in Repatha®.

**Before you start using Repatha®**, tell your healthcare provider about all your medical conditions, including if you are allergic to rubber or latex, are pregnant or plan to become pregnant, or are breastfeeding or plan to breastfeed. Repatha® is available as prefilled single-dose SureClick® autoinjectors and prefilled single-dose syringes that either contain dry natural rubber (a derivative of latex) in the needle cover or are not made with natural rubber latex. The carton and “Instructions for Use” will state if your prefilled single-dose SureClick® autoinjector or prefilled single-dose syringe contains dry natural rubber. The single-dose Pushtronex® system (on-body infusor with prefilled cartridge) is not made with natural rubber latex.

Tell your healthcare provider or pharmacist about any prescription and over-the-counter medicines, vitamins, or herbal supplements you take.

### **What are the possible side effects of Repatha®?**

Repatha® can cause serious side effects including serious allergic reactions. Stop taking Repatha® and call your healthcare provider or seek emergency help right away if you have any of these symptoms: trouble breathing or swallowing, raised bumps (hives), rash or itching, swelling of the face, lips, tongue, throat or arms.

The most common side effects of Repatha® include: runny nose, sore throat, symptoms of the common cold, flu or flu-like symptoms, back pain, high blood sugar levels (diabetes) and redness, pain, or bruising at the injection site.

Tell your healthcare provider if you have any side effect that bothers you or that does not go away.

These are not all the possible side effects of Repatha®. Ask your healthcare provider or pharmacist for more information. Call your healthcare provider for medical advice about side effects.

**You are encouraged to report negative side effects of prescription drugs to the FDA. Visit [www.fda.gov/medwatch](http://www.fda.gov/medwatch), or call 1-800-FDA-1088.**

## APPROVED USE

### **What is Repatha®?**

Repatha® is an injectable prescription medicine used:

- to reduce the risk of major adverse cardiovascular (CV) events, such as death from cardiovascular disease, heart attack, stroke, certain types of chest pain conditions (unstable angina) requiring hospitalization, or certain types of heart surgery, in adults with cardiovascular disease
- along with diet alone or together with other cholesterol-lowering medicines in adults with high blood cholesterol levels called primary hyperlipidemia (including a type of high cholesterol called heterozygous familial hypercholesterolemia [HeFH]) to reduce low density lipoprotein (LDL) or bad cholesterol.

**Please see full [Prescribing Information](#).**

WELCOME

WHAT IS LDL-C?

ABOUT REPATHA®

YOUR LDL-C GOALS

LDL-C TRACKER

SUPPORT

CO-PAY CARD

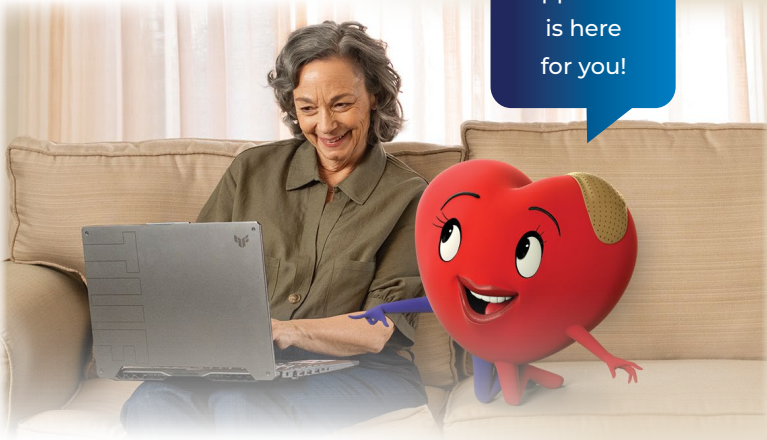
IMPORTANT SAFETY INFORMATION

For adults with heart disease



listen to your heart

Amgen® SupportPlus is here for you!



When you're lowering your high LDL-C (bad cholesterol) and reducing your risk of a heart attack or stroke, having a support team is important.

Amgen® SupportPlus is right here, right when you need us, with customized information, education, and resources designed to help guide you on your unique Repatha® journey.

Scan or click this QR code to enroll



Visit Repatha.com or call 1-844-REPATHA (1-844-737-2842)

IMPORTANT SAFETY INFORMATION

Do not use Repatha® if you are allergic to evolocumab or to any of the ingredients in Repatha®.

Please see additional Important Safety Information and Repatha® full Prescribing Information.



WELCOME

WHAT IS LDL-C?

ABOUT REPATHA®

YOUR LDL-C GOALS

LDL-C TRACKER

SUPPORT

CO-PAY CARD

IMPORTANT SAFETY INFORMATION